

# Adagio Selective Brightness Plugin for Gimp

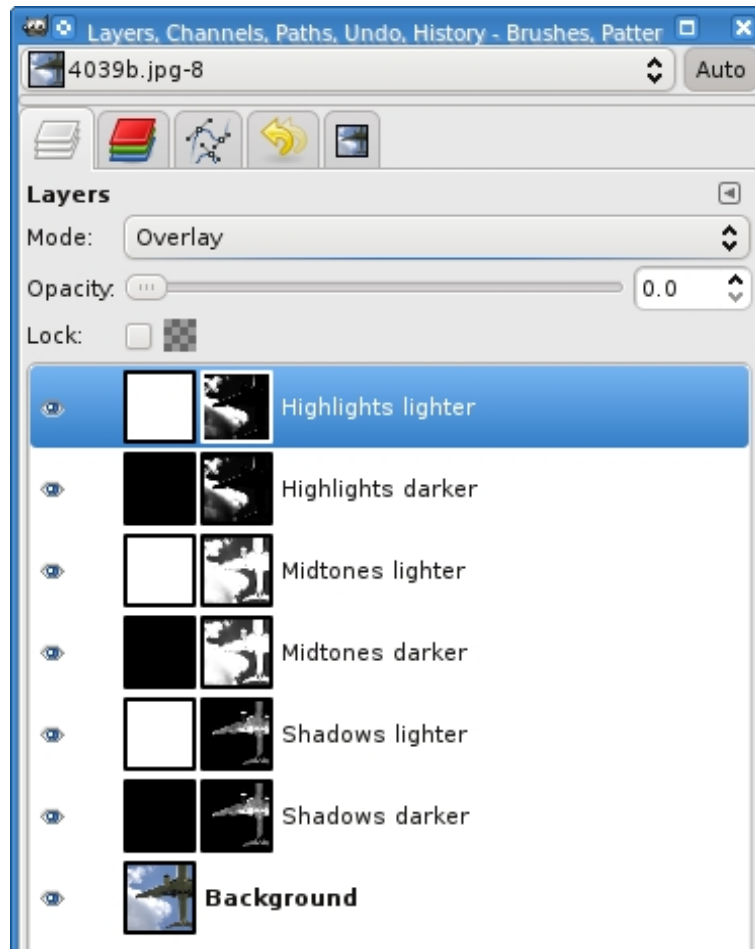


This Python plugin for Gimp allows to adjust the brightness of an image separately for dark, middletoned and light areas of an image. Just use the sliders seen in the screenshot above to adjust the lightness within the range from -100 (darkening) to 100 (lightening).

There are already some tools included in Gimp to adjust the lightness and contrast of an image („Brightness-Contrast“, „Levels“, „Curves“). The reason for adding another tool for a similar purpose is the fact, that the standard Gimp tools do not work non-destructively. It is almost a sin in image editing to apply the standard tools more than once on the same image since the loss of quality might be enormous. The Selective Brightness plugin, however, works non-destructively. That means that you can modify the changes again and again without enhancing lacks in the histogram with every single adjustment.

The plugin creates a stack of 6 additional layers and layer masks for the image. The lightness for shadows, midtones and highlights can be adjusted by modifying

the opacities of the layers:



Since it is a little bit confusing to adjust the opacities of 6 different layers and because you can see only the opacity of the currently activated layer, the plugin adds a simple GUI that controls the opacities of the 6 layers. It furthermore shows the current settings for shadows, midtones and highlights at the same time.

You can run the plugin later again. It will analyse the latest changes and sets the sliders according these changes. Thus it is easy to resume at this state. This works even if the image was closed and opened again. Just take sure, that the stack of the 6 added layers was not deleted (don't flatten the image or add further layers within this 6-layers-group if you want to modify your changes later).

## Functions of the buttons:

### OK:

- Applies changes
- Adds a new-from-visible layer
- Quits the Plugin

### Flatten:

- Applies changes
- Adds a new-from-visible layer
- Removes the 6 inserted layers
- Quits the Plugin

### Undo:

- Sets the sliders to the initial values  
(the same as *Zero to all* if no changes were made yet)

### Zero to all:

- Sets all 3 sliders to „0“

### Cancel:

- Quits without changes

## Installation

You have to copy these two files to your Gimp plugin folder:

- SelectiveBrightness.gui
- SelectiveBrightness.py (Linux users have to make this file executable)

## Menu location

<Image>/Colors/Adagio Selective Brightness